



Getting Started

For Connect Software v1.0

To set up your Bluelab Connect Stick and install the Bluelab Connect Software

Download your Bluelab Connect software and latest version updates online at www.getbluelab.com

Scan to go to Bluelab's customer support centre for product manuals and technical advice.



www.getbluelab.com

Multiple Bluelab Connect devices can be set up using only one Bluelab Connect Stick.

! IMPORTANT Before positioning your connect device:

Perform the initial connection (step 3) with your device plugged in near your computer.

This will reduce the chance of communication issues interfering with setup.

Setup of Bluelab Connect Stick

1 Install software and stick

- Download the Bluelab Connect Software installer file from our website www.getbluelab.com.
- Run the installer and wait until it has finished. You will need administrator rights.
- Insert the Bluelab Connect Stick into a USB port on your computer.

A balloon tip 'Installing device driver software - Click here for status' will display in the bottom right corner of the screen. Click to see when the installation is complete then continue to Step 2.



2 Run software

Run Bluelab Connect from the shortcut on the desktop or from the start menu.



Shortcut icon

A tour will display explaining the software and some of its features. The main window will then open.

3 Connect your first connect device

- Connect appropriate plug adaptor to power supply
- Connect power supply to device
- Switch on mains power.

d. Click the 'New Device' button, enter its 4 character key code (see device getting started) then click 'ok'.

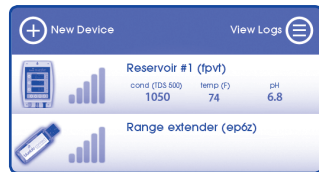


e. The device should connect within 1 minute, and then ask you to give it a name (if not already named)

Repeat above steps to connect multiple 'connect' devices into your network.

4 View device status

Click on a device image in the main window to open its viewer showing current status, 24 hour reading history and alarm status and other information. Close the viewer to return to the main window.



5 Change settings

Click 'Settings' (in the top left corner) to access Bluelab Connect settings.



ALL log files must be stopped before these settings can be changed.

Change settings for the following options:

- Conductivity units
- Temperature units
- Date format - for local log files.
- Local folder - set the location to save your log files on your computer.
- Google account - set up to enable logging to Google Drive (cloud) using a gmail account.
- Local and cloud summary files - click to create either or both for summary viewing.
- Auto start active logs - re-starts logging when restarting the Connect software.
- Auto-open cloud logs - opens cloud logs when restarting the Connect software.

Your choices will be set for all connected devices and log files created.

Click 'Save' to close the settings dialog.

Summary files

- Summary files are separate files to your log files.
- Summary files show only the current data of your devices, handy for quick checking remotely.
- Summary files are saved in the same location/s as your log files.

6 View and create Logs

Click on 'View Logs' to open the logging window.



7 To create a new log

a. Click the 'New Log' button which will open the 'Create Log' window.



Enter log name and select saving location, logging interval and the parameters you choose to log.

To create a new log cont....

- b. Select the 'Start log now' check box to start a log file (spreadsheet) once you select save and exit. Alternatively, if you prefer to start a log file at a later time, leave 'Start log now' un-checked and click 'Save' to close the dialog.
- c. Click the 'start' or 'stop' button in the Logging window to start or stop your log file. Your log will show a green circle arrow when it has been successfully set up and started.

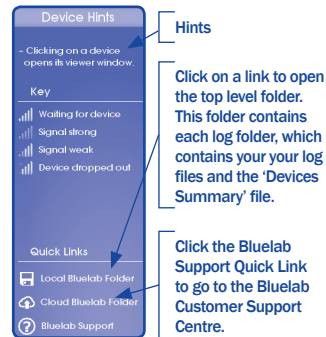
Clicking on the log when it is running will open the log file it is logging to.



Create new log window

8 Quick Links

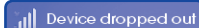
The right sidebar of the main window shows hints for using the program and has quick links to your local and cloud folder locations.



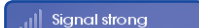
9 Move device/s to the grow system and re-connect

- a. Unplug your connect device/s and move them to where they will be mounted in the grow system. When they are unplugged,

BlueLab Connect will detect no signal (may take up to 1 minute to show).



- b. Connect the power supply to the device/s again in their intended location, they will return to showing signal and sending data almost immediately.



- c. If 'Signal weak' is displayed, you may need to reposition the device/s or use a range extender in between the device/s and the connect stick to boost the signal. See section 10 for more on this.



You are now done setting up BlueLab Connect!

10 To boost the signal

Ideally your devices, connect stick and the range extender should be positioned 6 feet off the ground and at least 2 foot away from metal objects.

BlueLab Connect forms a wireless network between your computer and all of the devices in your system.

To expand the range of the network, devices can relay messages to and from devices which are further away. If the distance between two devices is too far for a wireless link to be formed, the BlueLab Connect Range Extender can be placed between them.

Refer to the online user manual on 'positioning your devices' for information on maximising transmission range.

11 Important computer settings

The following computer settings are required to enable continuous data logging:

Stop your computer going to sleep (automatic shutdown)

If your computer goes to sleep during logging the connect program will stop and all log files will stop receiving data, therefore you must turn off the system standby/sleep settings as follows.

Windows XP

- a. Open Start Menu > Control Panel > Power Options.

- b. In the "Power Scheme" tab, select Home/Office from the dropdown

- c. Set "System Standby" to never

- d. Click "Ok" to save your changes

Windows Vista / 7 / 8

- a. Type "power options" into the start menu search box

- b. Click "Power Options"

- c. On the sidebar, click "Change when the computer sleeps"

- d. Set sleep to never

- e. Click "Save changes"

Stop automatic windows updates restarting the computer.

Every time Windows installs updates it is forced to restart unless someone is there to postpone indefinitely.

If automatic updates are turned off this no longer presents a problem.

Windows XP

- a. Open Start Menu > Control Panel > Power Options.

- b. In the "Power Scheme" tab, select Home/Office from the dropdown.

- c. Set "System Standby" to never

- d. Click "Ok" to save your changes

Windows Vista / 7 / 8

- a. Type "power options" into the start menu search box

- b. Click "Power Options"

- c. On the sidebar, click "Change when the computer sleeps"

- d. Set sleep to never

- e. Click "Save changes"

12 Accessing your data via a remote computer, smartphone or tablet

Log into your Google Drive account from any computer connected to the internet to view your data logs and Device Summary files.

By downloading the Google Drive application to your phone (from the internet) you can also view all your data on your phone.

 www.getbluelab.com



BlueLab are thinking green, please re-use or recycle.

CONSTICK_620245_V01_201213